



GS HYBRID 混合型太陽能逆變器

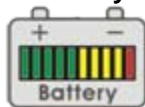
以太陽能與電池電力優先/市電輔助供電，內建切換器/太陽能充電器/AC充電器,500W~3kW, 純正弦波輸出

GS HYBRID適用於獨立型及混合型太陽能系統，由太陽能與電池電力優先輸出至負載端，當電力不足供應時，由市電輔助供給，系統內建太陽能充放電控制器，AC充放電控制器，除可透過通訊介面以PC監看，並可設定充電截止電壓等參數，精巧的設計讓使用及安裝上更為容易，可做為再生能源應用，讓系統完全以太陽能方式供電並以市電做為備用電源。

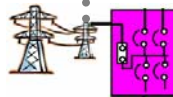
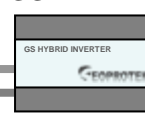
Solar PV Array



Battery



GS HYBRID



Public Grid

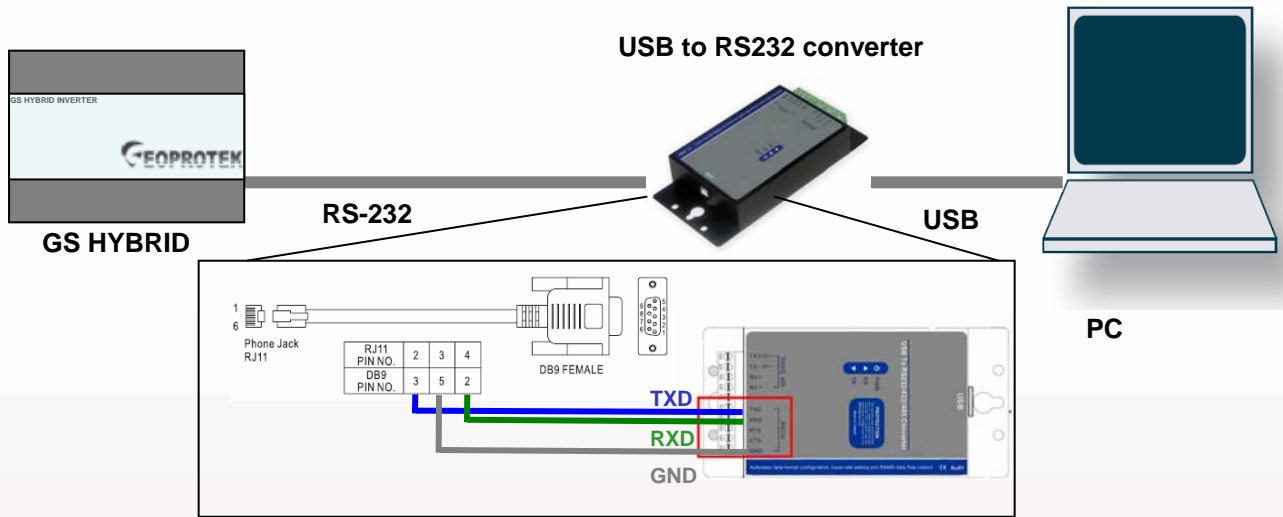


Application

GS HYBRID 軟體功能

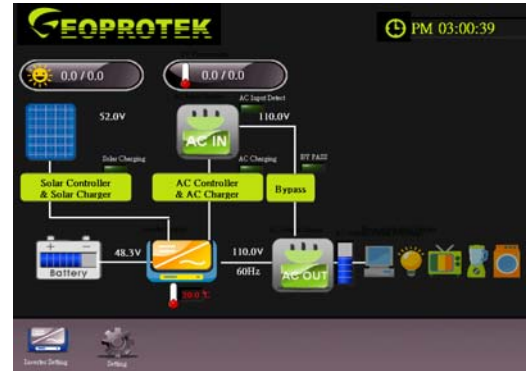
(Only for GSH-15XX, GSH-30XX)

系統圖:



軟體特點

- 監控太陽能電壓、AC輸入電壓、電池電壓、輸出電壓、逆變器溫度、輸出頻率
- 偵測AC充電狀態、太陽能充電狀態、AC輸入狀態、Bypass狀態、電池水位、負載水位
- 修改逆變器參數設定(電池充電截止電壓、太陽能充電電壓、逆變器警報電壓、逆變器關機電壓、AC輸入啟動電壓、AC輸出電壓、AC輸出頻率、模式選擇)



模式選擇

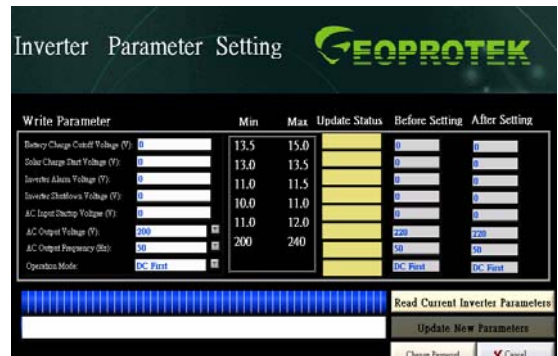
GS Hybrid是一個獨立型太陽能逆變器，您可以選擇“DC first mode”或“AC first mode”。

DC first mode

系統主要由電池及太陽能來供應負載，當電池電壓過低或陰天時，系統會由AC Input (市電)來供應負載，同時將電池充滿

AC first mode

系統主要由AC Input (市電)來供應負載，當AC Input (市電)斷電時，系統會切換到由電池或太陽能供給負載



詳細規格:

	GSH-1512 / GSH-1512U	GSH-1524 / GSH-1524U	GSH-1548 / GSH-1548U	GSH-3012 / GSH-3012U	GSH-3024 / GSH-3024U	GSH-3048 / GSH-3048U
AC輸出電壓	230VAC(200~240VAC selectable) / 110VAC(100~120VAC selectable) pure sine wave					
AC輸出頻率	50Hz(220VAC) / 60Hz(110VAC)					
連續 AC 輸出功率	1500W	1500W	1500W	3000W	3000W	3000W
瞬間 AC 輸出功率	3000W	3000W	3000W	6000W	6000W	6000W
輸出電壓諧波失真	< 3%					
功率因素	-1 to 1					
AC輸入電壓範圍	230VAC(175~275VAC) / 110VAC(90~130VAC)					
AC輸入頻率	50Hz(220VAC) / 60Hz(110VAC)					
最大輸入功率	1800W	1800W	1800W	3600W	3600W	3600W
最大太陽能輸入電壓	25VDC	45VDC	75VDC	25VDC	45VDC	75VDC
最大太陽能充電電流	25A	25A	25A	25A	25A	25A
電池電壓輸入範圍	12VDC (10.5~15VDC C)	24VDC (21~30VDC)	48VDC (42~60VDC)	12VDC (10.5~15VDC C)	24VDC (21~30VDC)	48VDC (42~60VDC)
最大電池充電電流	150A	75A	37.5A	300A	150A	75A
充電電壓	14.3VDC (13.5~15VDC C Adjustable)	28.5VDC (27~30VDC Adjustable)	57VDC (54~60VDC Adjustable)	14.3VDC (13.5~15VDC C Adjustable)	28.5VDC (27~30VDC Adjustable)	57VDC (54~60VDC Adjustable)
最大效率	88%	90%	91%	89%	91%	92%
切換時間	10ms	10ms	10ms	10ms	10ms	10ms
待機消耗功率	<18W	<18W	<18W	<18W	<18W	<18W
裝置保護	short-circuit, overload, over-temperature					
輸出介面	RS-232					
尺寸: W x H x D (mm)	420x220x88	420x220x88	420x220x88	467x284x100	467x284x100	467x284x100
重量	6.85	6.85	6.85	12.9	12.9	12.9
工作溫度	0 ~ 40 °C					
工作溼度	20~90%, non-condensing					

Solar PV Array

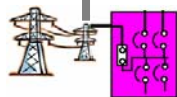
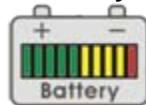


GSH-15XX,30XX



Application

Battery



Public Grid

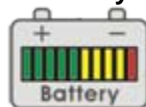
GSH-05XX Specification:

	GSH-0512U	GSH-0524U	GSH-0548U	GSH-0512N	GSH-0524N	GSH-0548N
AC輸出電壓	110VAC	110VAC	110VAC	230VAC	230VAC	230VAC
AC輸出頻率	60Hz	60Hz	60Hz	50Hz	50Hz	50Hz
連續 AC 輸出功率	350W	500W	500W	350W	500W	500W
瞬間 AC 輸出功率	700W	1000W	1000W	700W	1000W	1000W
輸出電壓諧波失真	< 3%					
功率因素	-1 to 1					
AC輸入電壓範圍	N/A (Not Build In AC Charger)					
AC輸入頻率	N/A (Not Build In AC Charger)					
最大輸入功率	350W	500W	500W	350W	500W	500W
最大太陽能輸入電壓	20~40V	35~80V	70~160V	20~40V	35~80V	70~160V
最大太陽能充電電流	15A	15A	7.5A	15A	15A	7.5A
電池電壓輸入範圍	12VDC (10.5~15VDC) C)	24VDC (21~30VDC)	48VDC (42~60VDC)	12VDC (10.5~15VDC) C)	24VDC (21~30VDC)	48VDC (42~60VDC)
最大電池充電電流	25A	20A	10A	25A	20A	10A
充電電壓	14VDC	28VDC	56VDC	14VDC	28VDC	56VDC
最大效率	85%	87%	87%	86%	88%	88%
切換時間	-	-	-	-	-	-
待機消耗功率	≤1mA	≤1mA	≤1mA	≤1mA	≤1mA	≤1mA
裝置保護	short-circuit, overload, over-temperature					
輸出介面	-					
尺寸: W x H x D (mm)	205x158x67	205x158x67	205x158x67	205x158x67	205x158x67	205x158x67
重量	1.92	1.92	1.92	1.92	1.92	1.92
工作溫度	-20 ~ 40 °C					
工作溼度	20~90%, non-condensing					

Solar PV Array



Battery



GSH-05XX



Application

訂購編號:

GSH – 15 12 - N - AC - A
XX XX - X - XX - X

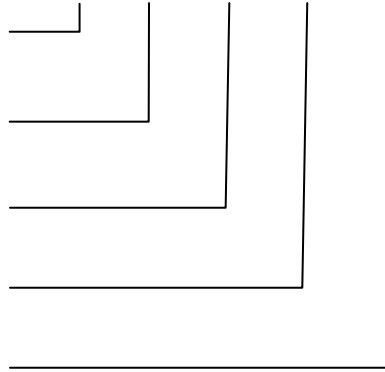
(1) AC輸出功率

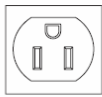
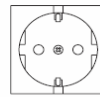
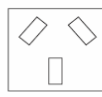
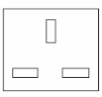
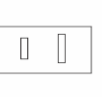
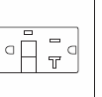
(2) 電池電壓

(3) AC輸出電壓

(4) 模式選擇

(5) AC接頭型式



(1) AC輸出功率	05	500W				
	15	1.5kW				
	30	3kW				
(2) 電池電壓	12	12V Battery				
	24	24V Battery				
	48	48V Battery				
(3) AC電壓	N	230VAC				
	U	110VAC				
(4) 模式選擇	AC	AC First Mode				
	DC	DC First Mode				
(5) AC接頭型式	     					
	TYPE-A	TYPE-B	TYPE-C	TYPE-D	TYPE-E	TYPE-F