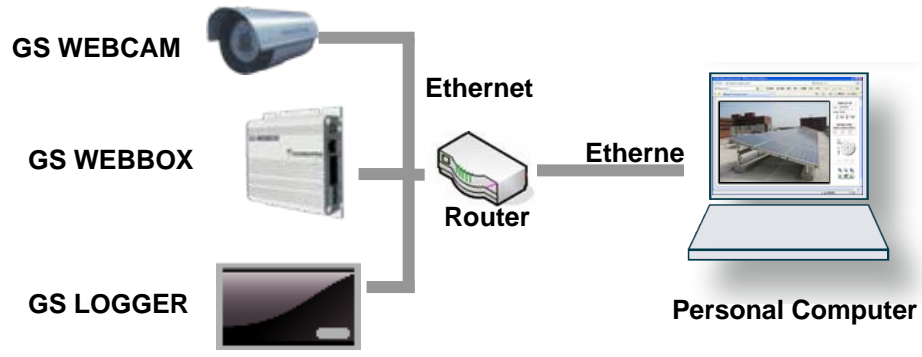




# GS WEBCAM

## On Site Real Time Image Monitoring

GS WEBCAM is an Internet Camera, it provided the necessary real-time monitoring to see the security protection of the solar power system and combined with the Web images of GS LOGGER or GS WEBBOX. Users need to set an IP address and use the network cable connected to the home or office network (LAN) equipment, it plug and play and enter ID and password to begin the video monitoring. Do not have to worry about complex network configuration. It's a user friendly surveillance camera image that suitable for remote system monitor.



## Specifications:

	GS WEBCAM-INDOOR	GS WEBCAM-OUTDOOR
Image Sensor	1/4" in VGA Resolution	1/4" CMOS in 1280 x 800 Resolution
Lens	f=4.09 mm, F 2.0 Board lens, Fixed	f=3.6 mm, F 1.8, Board lens IR corrected, Removable IR-cut filter for day & night function
Minimum Illumination	0.4 Lux / F2.0 ( typical )	0 Lux @ F1.8 ( IR LED on )
IR Illuminators	None	IR LED*12 Built-in IR illuminators, Effective up to 15 meter
Compression Format	MPEG-4	MPEG-4
Resolution		
Frames	Up to 30/25 fps at 640x480	MPEG-4: Up to 30/25 fps at 1280x800
Image Format	MJPEG & MPEG-4	MJPEG & MPEG-4
Size (WxHxL)	26.9x86.7x87.6mm	Ø: 60mm x 170 mm Cable length: 400 mm Cable diameter: Ø 12 mm; Ring: Ø 18 mm
Power	5VDC Power consumption: 5W	12V DC 24V AC Power consumption: Max. 4 W
Temperature	0~40°C	-20~50°C
Humidity	20~80% RH	90% RH
Central Software	View by IE web browser, or GS MOBILE	View by IE web browser, or GS MOBILE